

The Internet of Things

Vertical Solutions



Dubai, UAE
February 18-19, 2015

*TOMORROW
starts here.*

The Internet Of Things

Vertical Solutions

Khaled Allam

Business Development Manager - Middle East

What Is the Internet of Things?

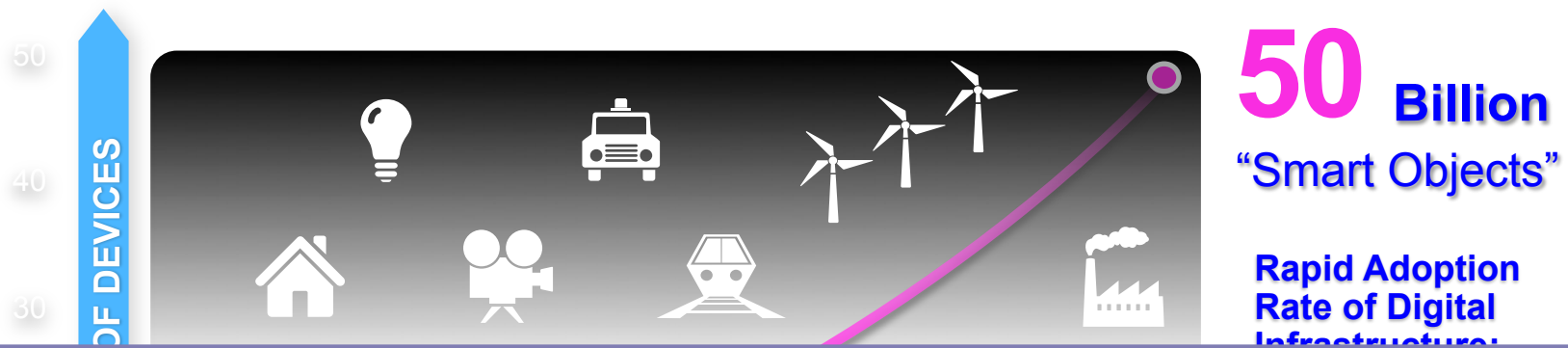
The Internet of Things is the intelligent connectivity of physical devices driving massive gains in **efficiency, business growth, and quality of life.**”

Cisco Calls It The Internet of Everything (IoE)

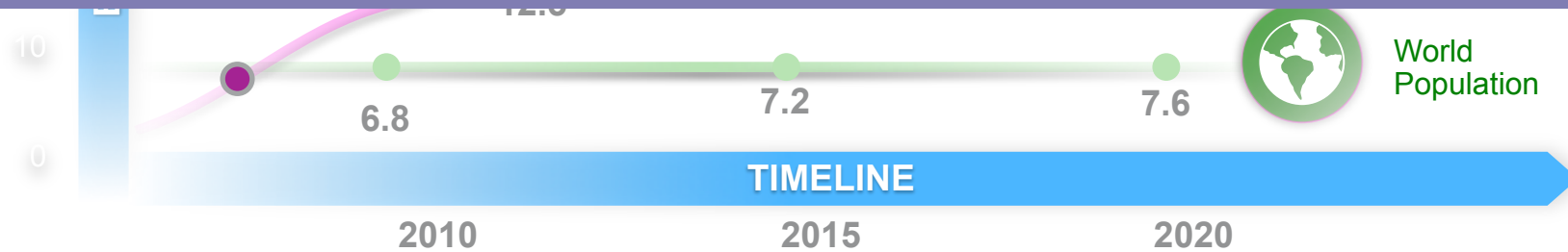


Networked Connection of People, Process, Data, Things

IoT Is Here Now – and Growing!



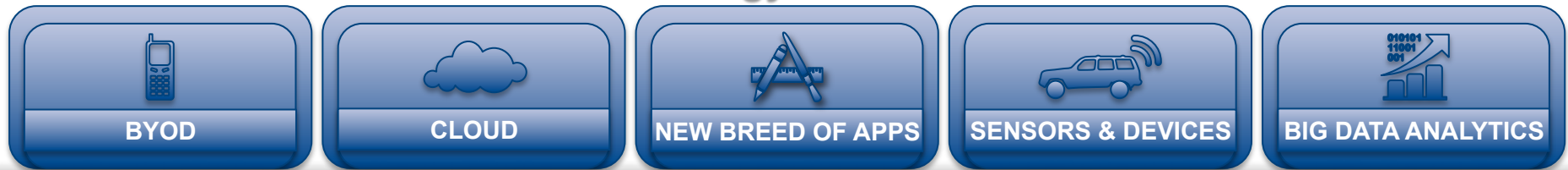
The New Essential Infrastructure



Enablers/Drivers of IoT

More Innovation and Change than at Any Other Point in Our Lifetime

Technology Transitions



Network as the Platform



Business Transitions

The Data Aggregation Challenge

500 Gigabytes

Data generated by an offshore oil rig **weekly**

10,000 Gigabytes

Data generated by a jet engine every **30 minutes**

1.1 Billion

Data points generated by sensors **daily**

1000 Gigabytes

Data generated by an oil refinery **daily**

2.5 Billion Gigabytes

Data generated worldwide **daily**

90% of the world's data

Has been created in the last **2 years!**

Connected Objects Generate Big Data



46 million smart meters in the U.S alone
1.1 billion data points (.5TB) per day



A single consumer packaged good manufacturing machine generates
13MB data samples per day



A large offshore field produces 0.75TB of data weekly
A large refinery generates 1TB of raw data per day



10TB of data for every 30 minutes of flight
With >25,000 flights per day, petabytes daily

The World Generates More Than 2 Exabytes of Data Every Day

Cisco Internet of Things Portfolio



Manufacturing



Mining



Energy-Utility



Oil and Gas



Transportation



City



Defense



SP/M2M

Plantwide Ethernet, Intelligent Transportation, Smart Cities, S&C Refinery, Smart Connected Vehicle, Smart Grid

IE 2000
IE 3000
CGS 1000
CGS 2500



Plant Switching

CGR 2000



ASR 903

Plant Routing



1552
Rugged
Wireless

CGR 1000



819H M2M ISR
Gateway Router

Field Network

5915 + 5921 +
5940 Rugged
Embedded
Services
Routers



ESS2020
Rugged Switch



Embedded Networks

Video Surveillance
Manager and IP
Cameras



Physical
Access
Manager



IPIC
S

Physical Security

Network Management and IoT Security

Fog Computing; Cisco IOx

Data Center/Virtualization

Building an IoT Ecosystem

VERTICALS



Manufacturing



Mining



Energy-Utility



Oil and Gas



Transportation



City



Defense



SP/M2M

INDUSTRY PARTNERS



IoT ENABLERS

Time Sync

Pervasive Cyber Security

Scalable Routing

Deterministic Ethernet

Guaranteed Delivery

Big Data Management

SP Services

RUGGEDIZED PRODUCTS



Ruggedized Wireless AP



Industrial Routers and Switches



Industrial Security



Hardened Mobile M2M Gateway



IP Cameras



Video Surveillance

CISCO'S APPROACH TO IoT

“Customer-In” Approach

- Understanding of key business care abouts and pain points
- Relevance to LOB leaders / CXOs

Products/Technologies

- Best-in-class ruggedized products
- Smart solutions for verticals
- IoT architectures

Strategic Partnerships

- Industry partners
- Vertical software / service partners
- Service providers

Utility Solutions Infographic

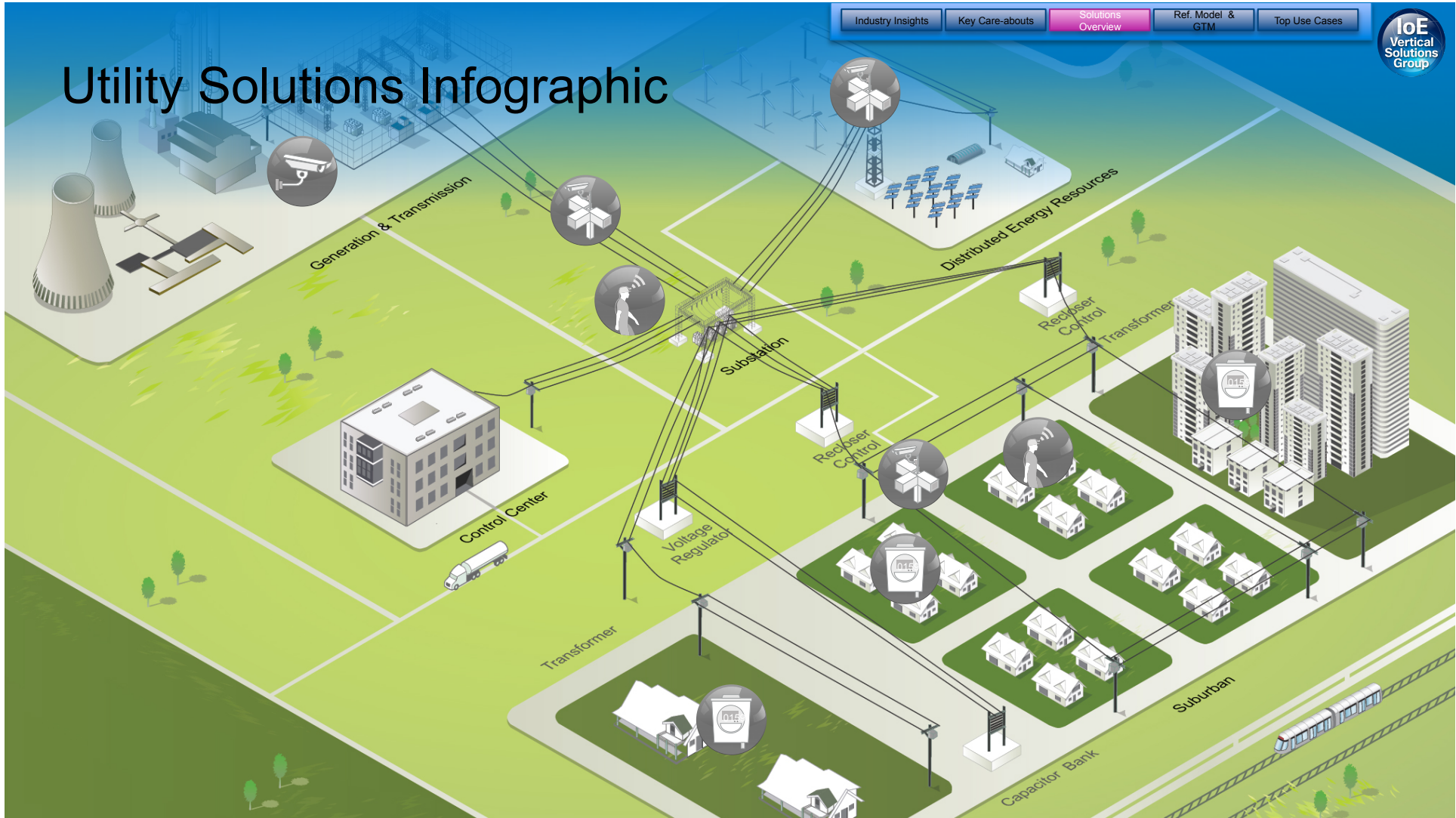
Industry Insights

Key Care-about

Solutions Overview

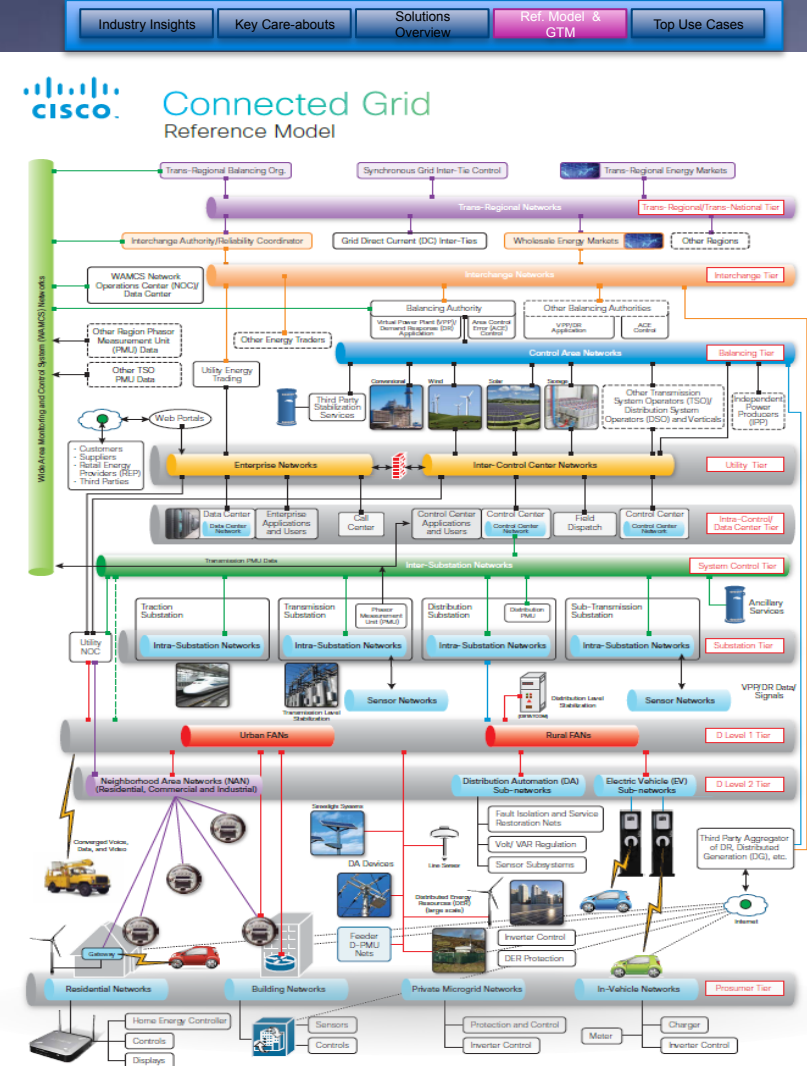
Ref. Model & GTM

Top Use Cases

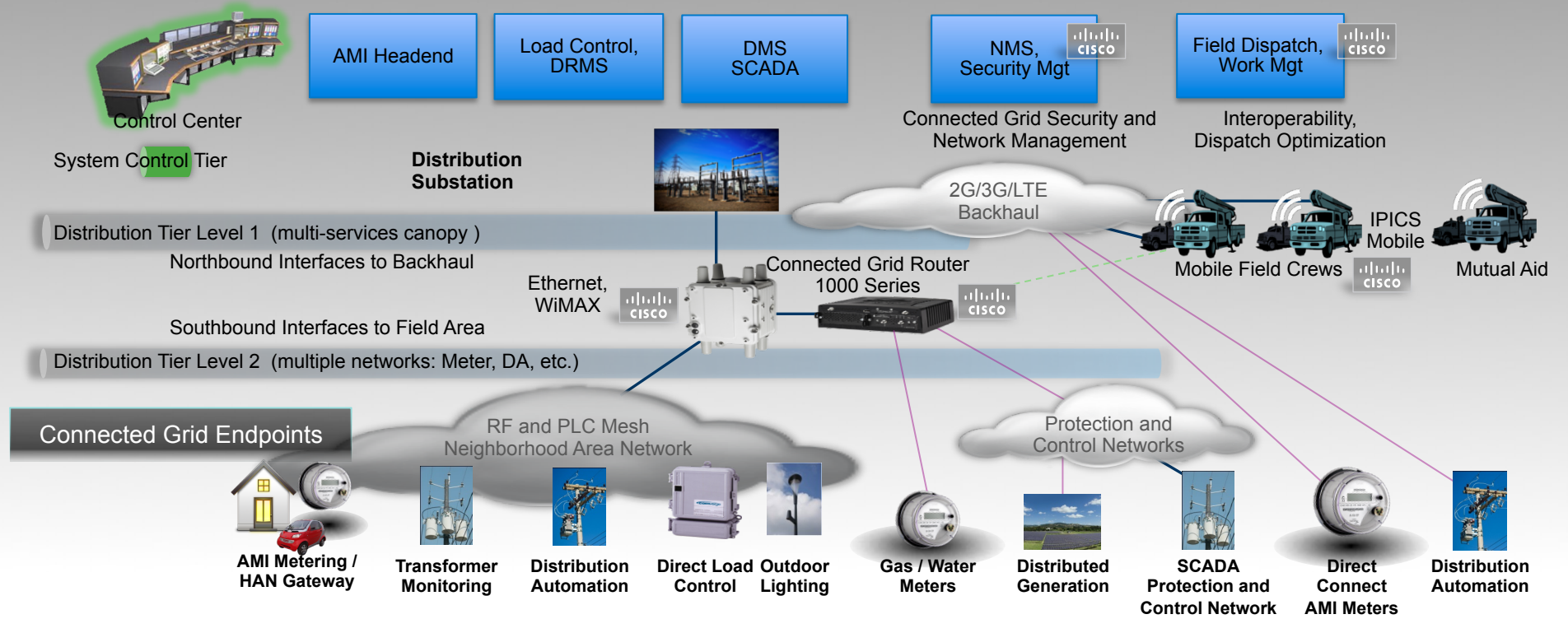


GridBlocks™ Reference Model

- Describes the power delivery chain
- Architectures detail networking each of the eleven tiers in this model
- Results in a complete end-to-end architecture for converged power delivery chain communications
- Framework for
 - Integrating legacy devices
 - Using existing products in new ways
 - Integrating new ecosystem partners
 - Developing new products and services
- Provides a platform for innovation

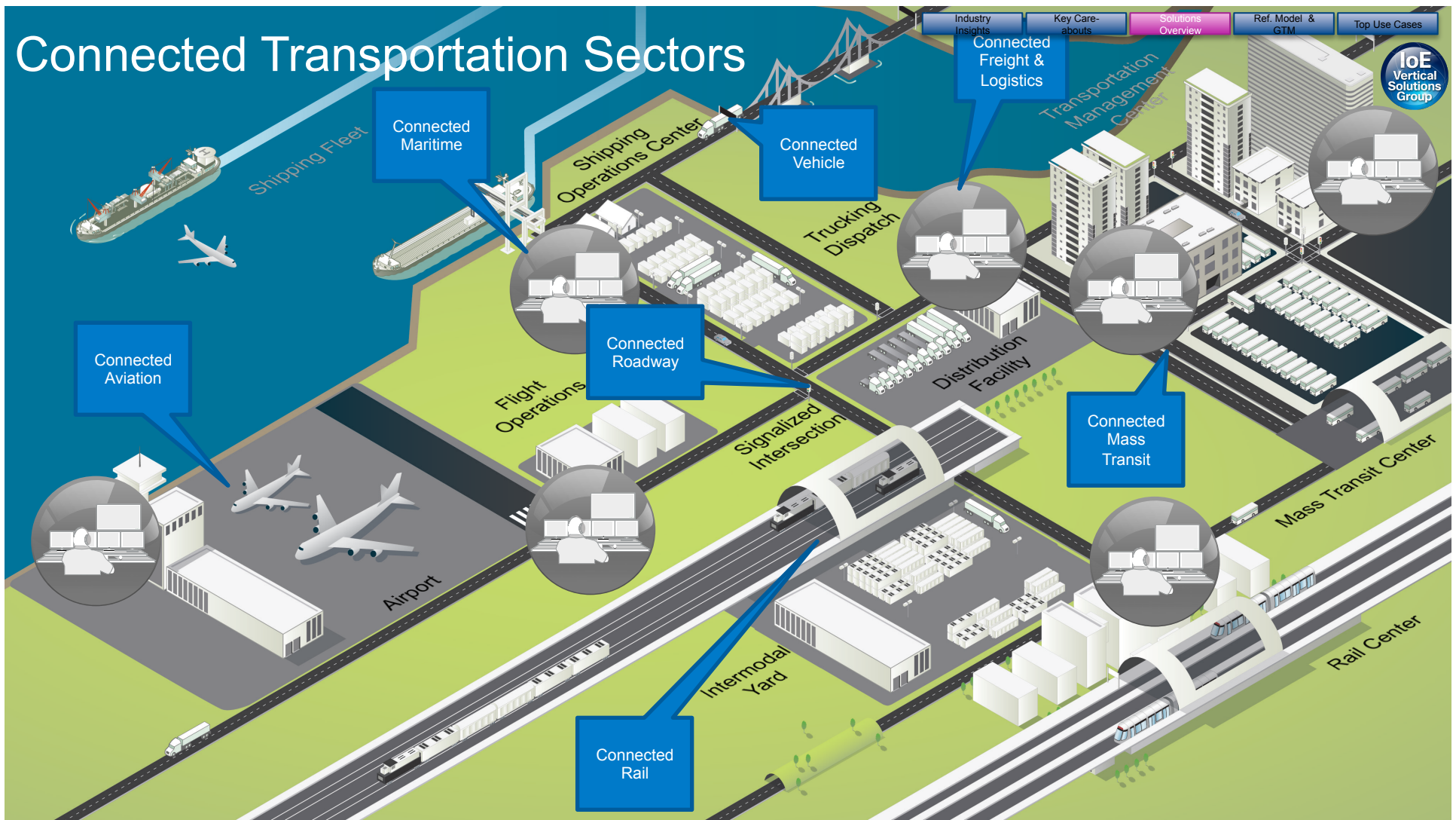


The Connected Grid

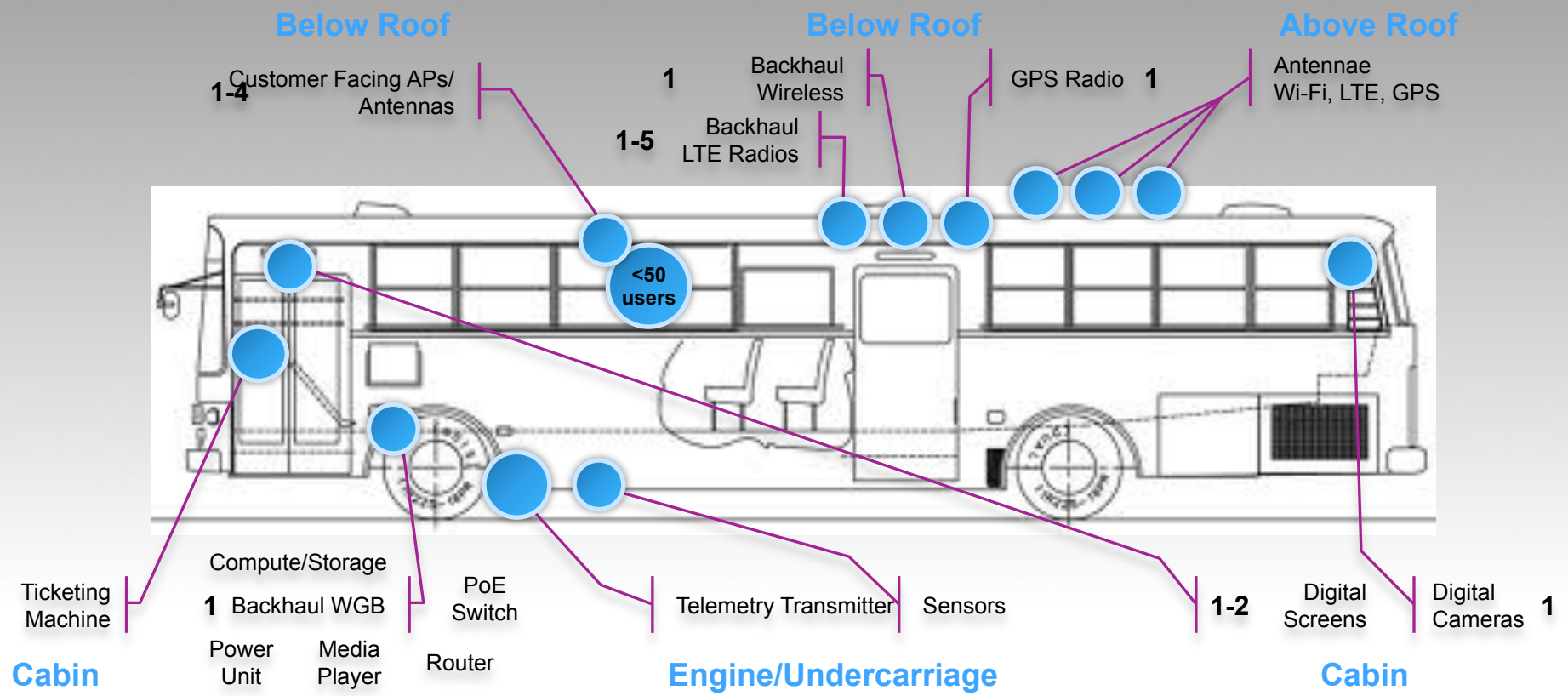


Millions of Potential Grid Endpoints

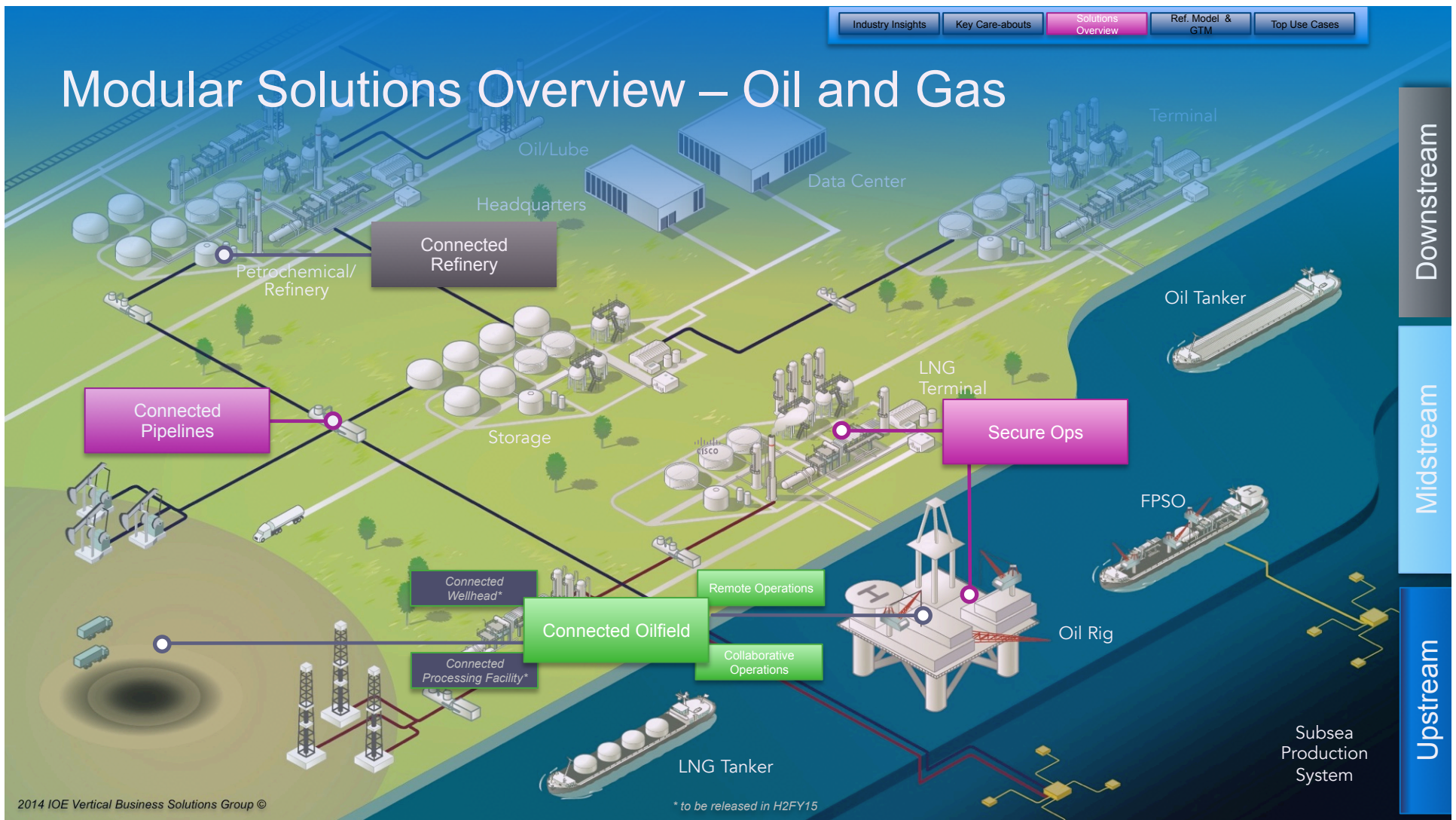
Connected Transportation Sectors



The Connected Bus and Mass Transit



Modular Solutions Overview – Oil and Gas



Downstream

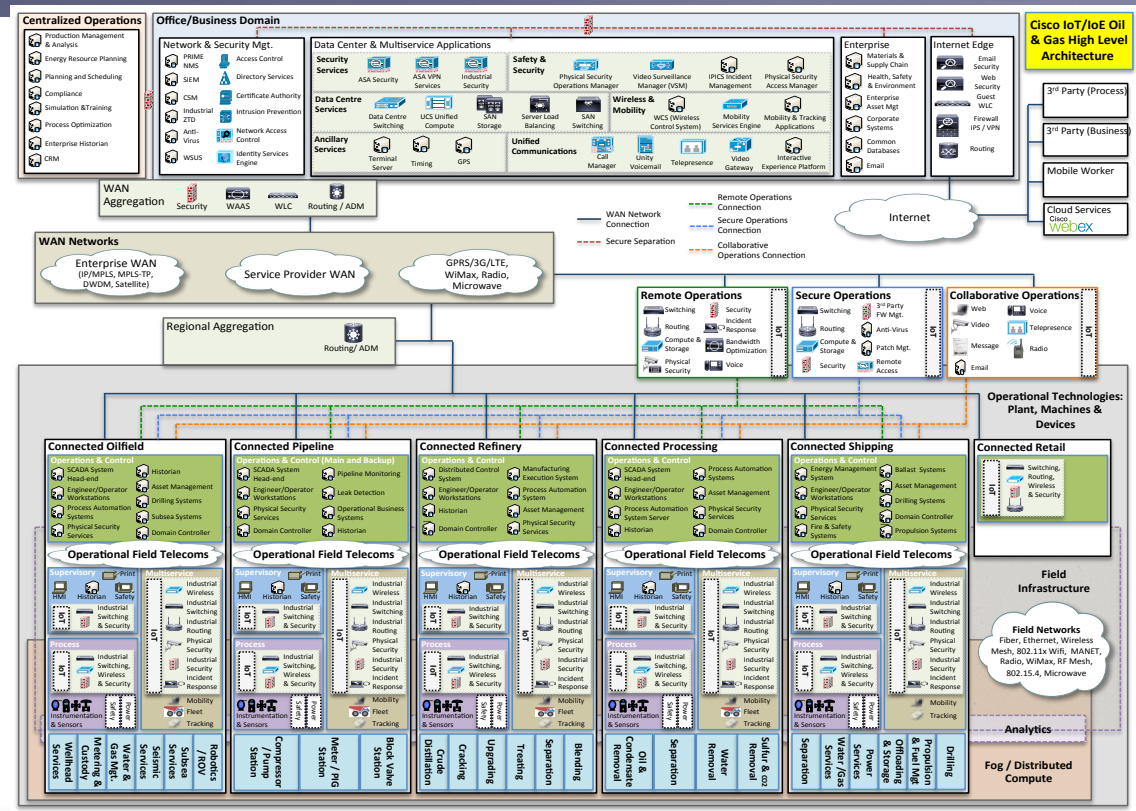
Midstream

Upstream

O&G Reference Model

Forward-looking view on how to integrate a **Process Control** environment with a digital communications network.

- A flexible, modular approach that supports a phased oil and gas transformation
- An open standards-based vision of **Oil & Gas** delivery solutions connectivity
- A lower cost of ownership and new value creation by helping to enable new services and functional integration
- A framework for developing custom **Process Control** modernization roadmaps for companies well into the future



Industry Insights

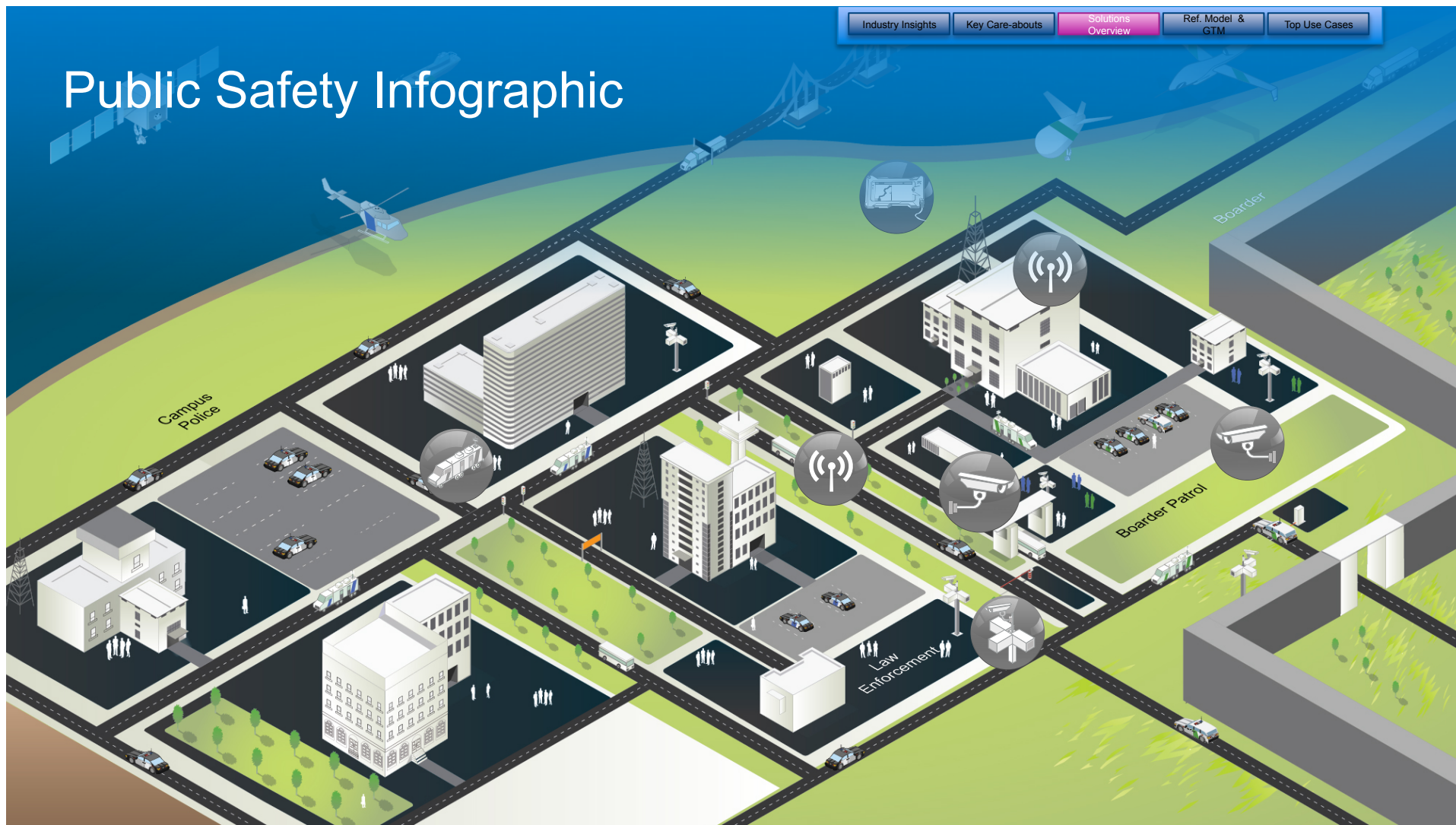
Key Care-about

Solutions
Overview

Ref. Model &
GTM

Top Use Cases

Public Safety Infographic



CONNECTED POLICE ARCHITECTURE

Cisco Connected City Architecture

Police Headquarter / Police Station

Police Department Private Cloud

UCS	CAD Systems	LPR Apps	Fleet management	Application Servers	Operational DBs
VSOM	E-911	Face Reco Apps	IPICS / PHYSEC	Operational Business Systems	Forensics Apps

LMR GW | SATCOM MDM | CELLULAR GW

PD DMZ

Enterprise apps: Email, WEB, ERP, Voice, TP..

City Network

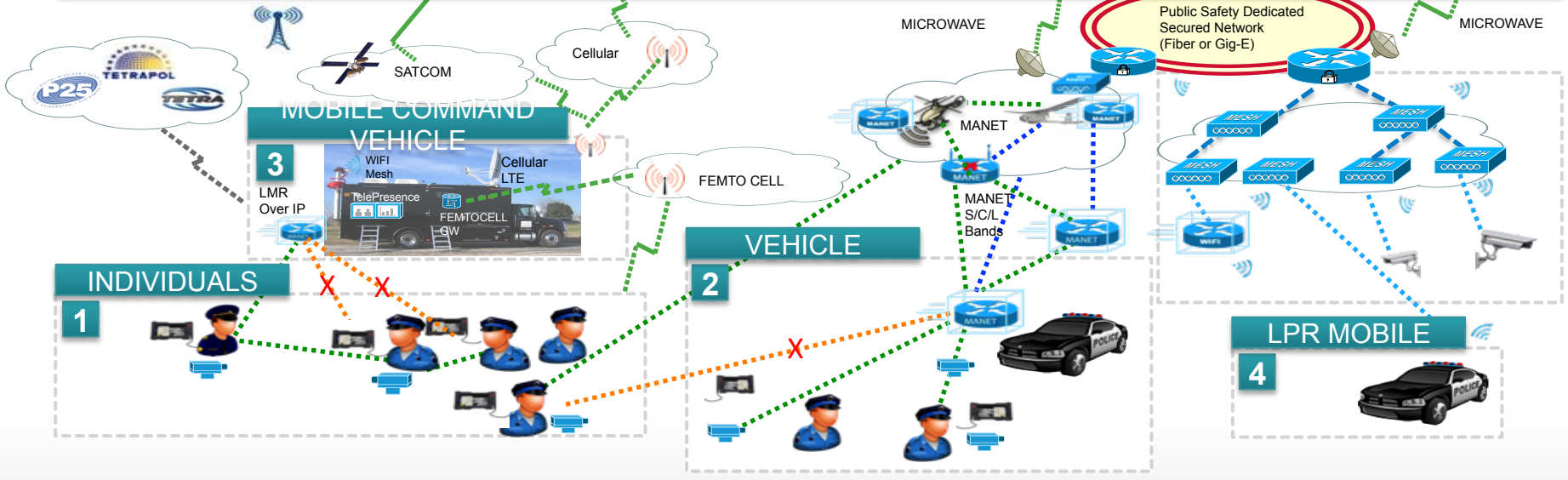
ASA

Jump Server AD

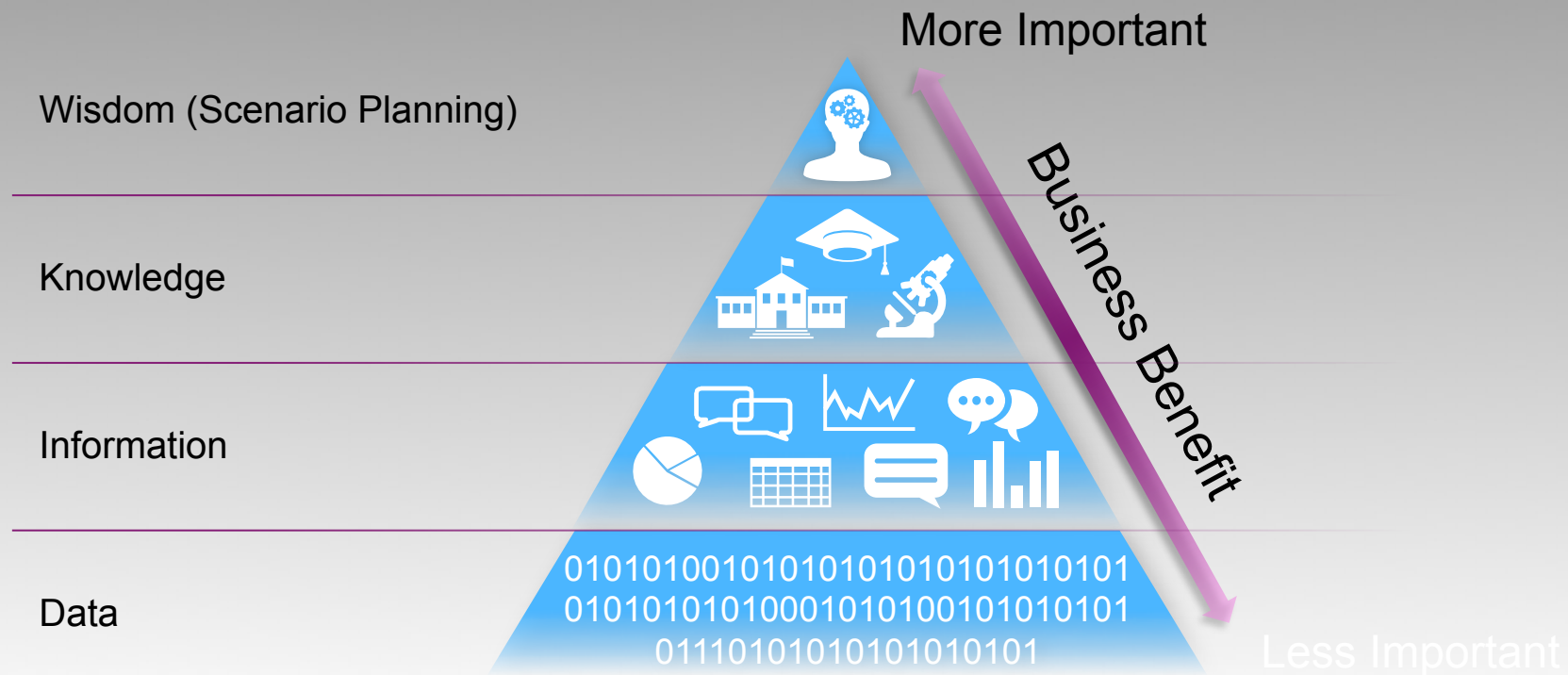
Catalyst 4500/6500

WLC, ISE, VSM

Public Safety Dedicated Secured Network (Fiber or Gig-E)



IoT Transforms Data into Wisdom



Big Data becomes Open Data for Customers, Consumers to Use



CISCO